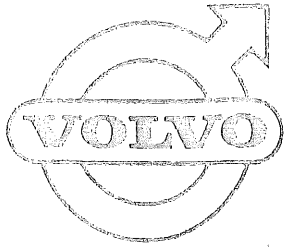


# ASSEMBLY PROCEDURE FOR KD (knockdown) KIT

PART NO. 279 902



## for 245 & 265 STATION WAGON

AFTER REMOVING ALL PARTS FROM CONTAINER, ASSEMBLE PLATFORM ASSEMBLY AS FOLLOWS.

### STEP 1

Place longitudinals parallel to each other with flange side up. Install cross straps into notches of longitudinals and press down until tabs lock in place under longitudinal flanges. Install insulators on longitudinal flanges and turn platform assembly right side up, taking care not to bend cross straps. Install nuts onto each end of cross strap. (See Fig. 1)

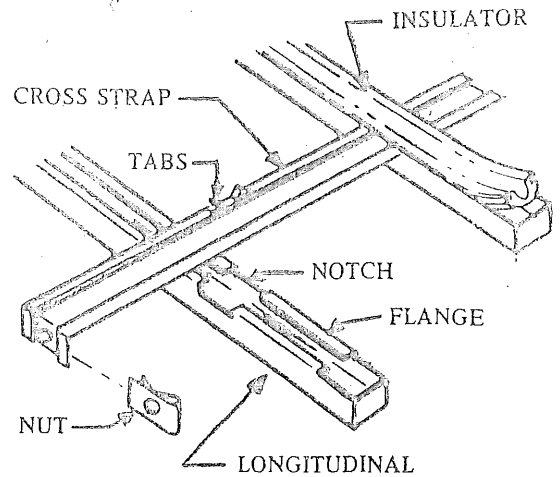


FIGURE 1

### STEP 2

With set screw hole in front and rear bases facing away from end of platform assembly, and center base hole facing rearward, attach bases to cross strap by inserting screw provided into, but not thru, nut. (See Fig. 2)

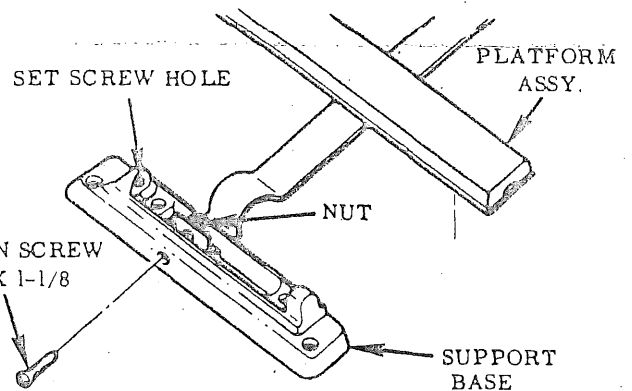


FIGURE 2

### STEP 3

Insert support oval bosses into end rails and be sure that the curvature of the end rails is in an upward position that will follow the curvature of the roof. Align screw holes, insert screws provided, and tighten screws. (See Fig. 3)

### STEP 4

Seat end rail assembly into base by inserting pointed end of support into conical hole in base. (See Fig. 3) Also assemble center support.

### STEP 5

Assemble two side rails to two end rail assemblies and center support and be sure that the curvature of the side rails is in an upward position that will follow the curvature of the roof.

### STEP 6

Tighten set screw in each base into supports. (See Fig. 3)

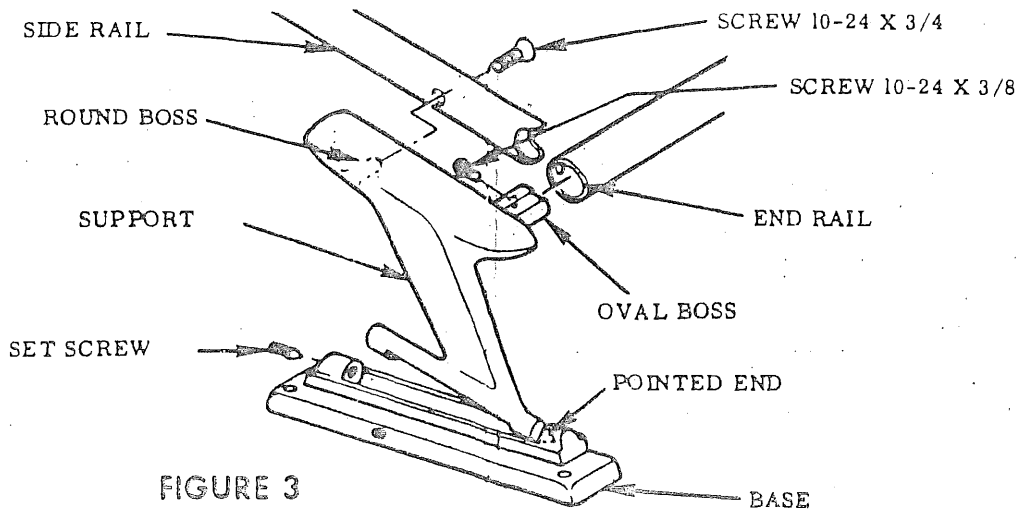


FIGURE 3

# INSTALLATION INSTRUCTIONS FOR ROOF LUGGAGE CARRIER

## STEP 7

Before fitting procedure is started, masking tape should be applied to roof panel in six local support attaching areas to avoid marring car finish. (See Fig. 4)

NOTE: HANDLE LUGGAGE CARRIER ASSEMBLY BY TUBULAR RAILS ONLY.

## STEP 8

Place luggage carrier assembly 1" forward of tailgate hinge on roof using extreme care to insure equal distance on both sides.

## STEP 9

Making sure that bases fit flat on roof, use bases as templates, marking hole centers with wax pencil or scriber. (See Fig. 4)

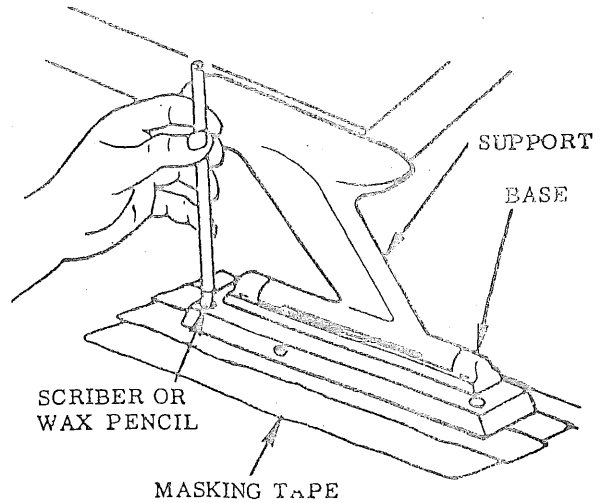


FIGURE 4

## STEP 10

Remove assembly from roof, center punch, pilot drill and enlarge holes. (See Fig. 5)

CAUTION: CARE MUST BE TAKEN TO PREVENT DRILL FROM PIERCING INTERIOR HEADLINING. MAXIMUM DRILL PENETRATION THRU ROOF NOT TO EXCEED 3/8".

## STEP 11

Remove tape, place gaskets over holes and insert special sealing nuts. (See Fig. 5)

NOTE: USE LIGHT PRESSURE ON CARRIER ASSEMBLY MOUNTING SCREWS UNTIL THREADS ENGAGE INTO NUT TO AVOID PUSHING NUT THRU ROOF INTERIOR.

## STEP 12

Position carrier assembly on gaskets, insert screws provided, and tighten screws in base securely. (See Fig. 5)

## STEP 13

Tighten tension screws equally to provide even tension on platform assembly. (See Fig. 2)

NOTE: CAUTION TAG MUST BE PLACED ON CARRIER ASSEMBLY FOR CUSTOMER INFORMATION ON USE OF LUGGAGE CARRIER. (See Fig. 6)

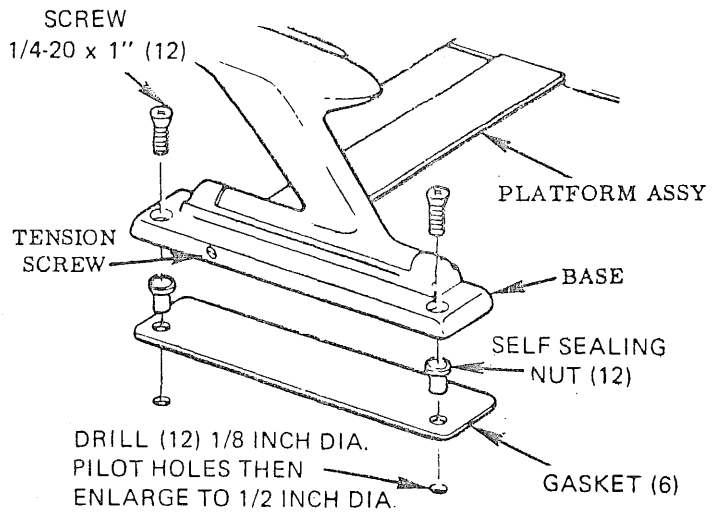


FIGURE 5

LONGITUDINAL BARS (5)

END RAIL

BASE

SIDE RAIL

CAUTION TAG

FRONT OF CAR

PLATFORM ASSY.

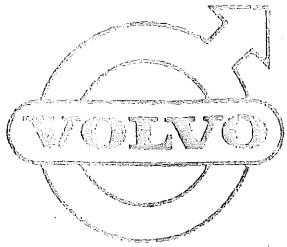
TAIL GATE HINGE

FIGURE 6

FORM NO. 07833

# ASSEMBLY PROCEDURE FOR KD (knockdown) KIT

PART NO. 279 902



## for 245 & 265 STATION WAGON

AFTER REMOVING ALL PARTS FROM CONTAINER, ASSEMBLE PLATFORM ASSEMBLY AS FOLLOWS.

### STEP 1

Place longitudinals parallel to each other with flange side up. Install cross straps into notches of longitudinals and press down until tabs lock in place under longitudinal flanges. Install insulators on longitudinal flanges and turn platform assembly right side up, taking care not to bend cross straps. Install nuts onto each end of cross strap. (See Fig. 1)

### STEP 2

With set screw hole in front and rear bases facing away from end of platform assembly, and center base hole facing rearward, attach bases to cross strap by inserting screw provided into, but not thru, nut. (See Fig. 2)

### STEP 3

Insert support oval bosses into end rails and be sure that the curvature of the end rails is in an upward position that will follow the curvature of the roof. Align screw holes, insert screws provided, and tighten screws. (See Fig. 3)

### STEP 4

Seat end rail assembly into base by inserting pointed end of support into conical hole in base. (See Fig. 3) Also assemble center support.

### STEP 5

Assemble two side rails to two end rail assemblies and center support and be sure that the curvature of the side rails is in an upward position that will follow the curvature of the roof.

### STEP 6

Tighten set screw in each base into supports. (See Fig. 3)

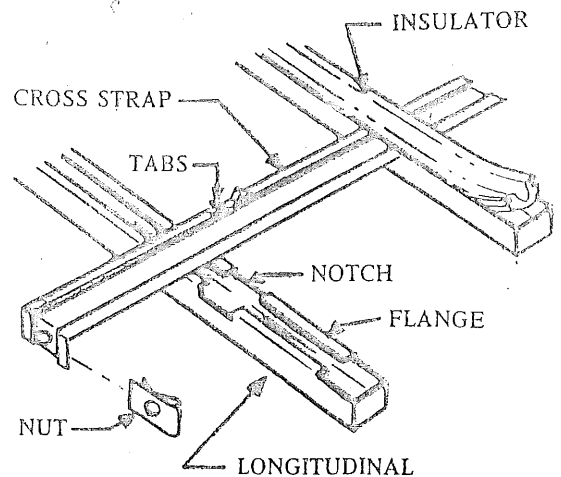


FIGURE 1

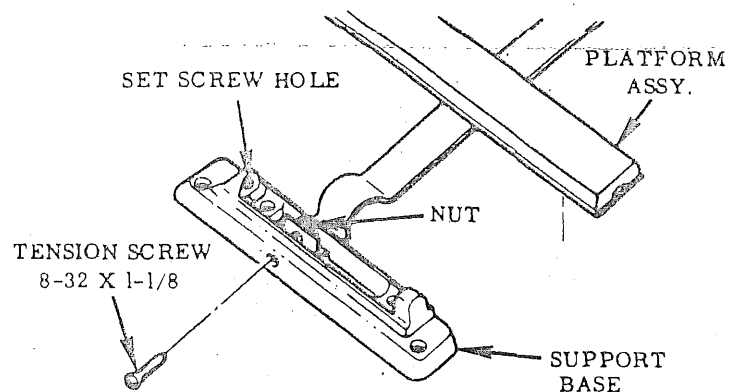


FIGURE 2

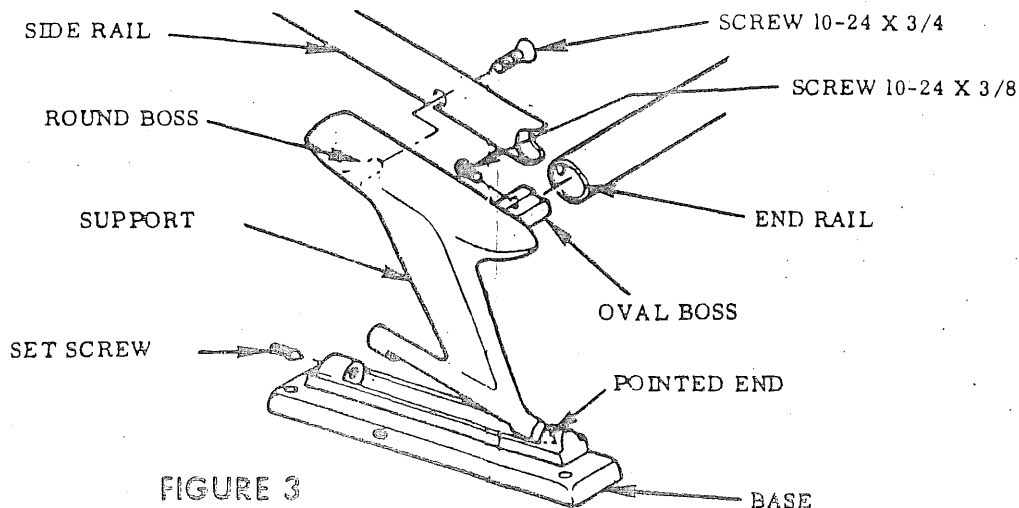


FIGURE 3

FORM NO. 07833

# INSTALLATION INSTRUCTIONS FOR ROOF LUGGAGE CARRIER

## STEP 7

Before fitting procedure is started, masking tape should be applied to roof panel in six local support attaching areas to avoid marring car finish. (See Fig. 4)

NOTE: HANDLE LUGGAGE CARRIER ASSEMBLY BY TUBULAR RAILS ONLY.

## STEP 8

Place luggage carrier assembly 1" forward of tailgate hinge on roof using extreme care to insure equal distance on both sides.

## STEP 9

Making sure that bases fit flat on roof, use bases as templates, marking hole centers with wax pencil or scriber. (See Fig. 4)

## STEP 10

Remove assembly from roof, center punch, pilot drill and enlarge holes. (See Fig. 5)

CAUTION: CARE MUST BE TAKEN TO PREVENT DRILL FROM PIERCING INTERIOR HEADLINING. MAXIMUM DRILL PENETRATION THRU ROOF NOT TO EXCEED 3/8".

## STEP 11

Remove tape, place gaskets over holes and insert special sealing nuts. (See Fig. 5)

NOTE: USE LIGHT PRESSURE ON CARRIER ASSEMBLY MOUNTING SCREWS UNTIL THREADS ENGAGE INTO NUT TO AVOID PUSHING NUT THRU ROOF INTERIOR.

## STEP 12

Position carrier assembly on gaskets, insert screws provided, and tighten screws in base securely. (See Fig. 5)

## STEP 13

Tighten tension screws equally to provide even tension on platform assembly. (See Fig. 2)

NOTE: CAUTION TAG MUST BE PLACED ON CARRIER ASSEMBLY FOR CUSTOMER INFORMATION ON USE OF LUGGAGE CARRIER. (See Fig. 6)

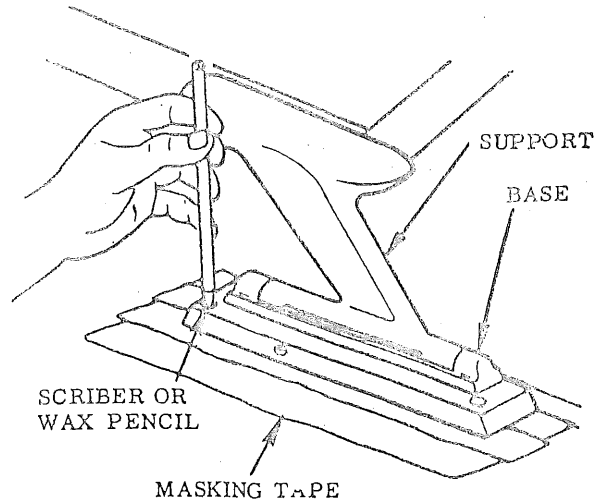


FIGURE 4

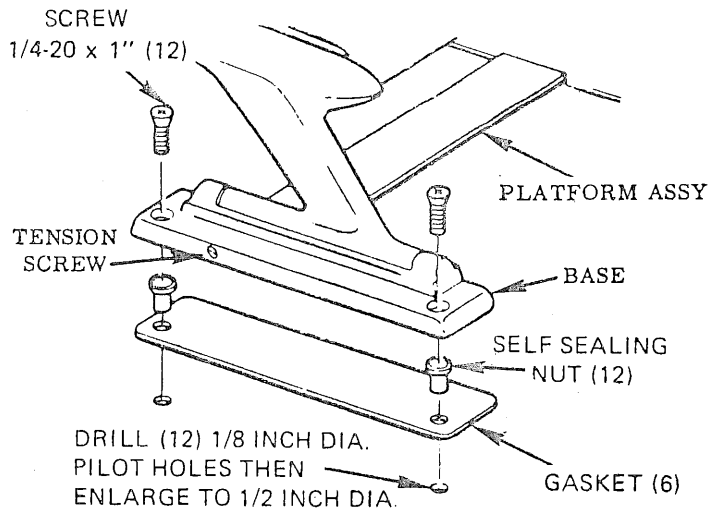


FIGURE 5

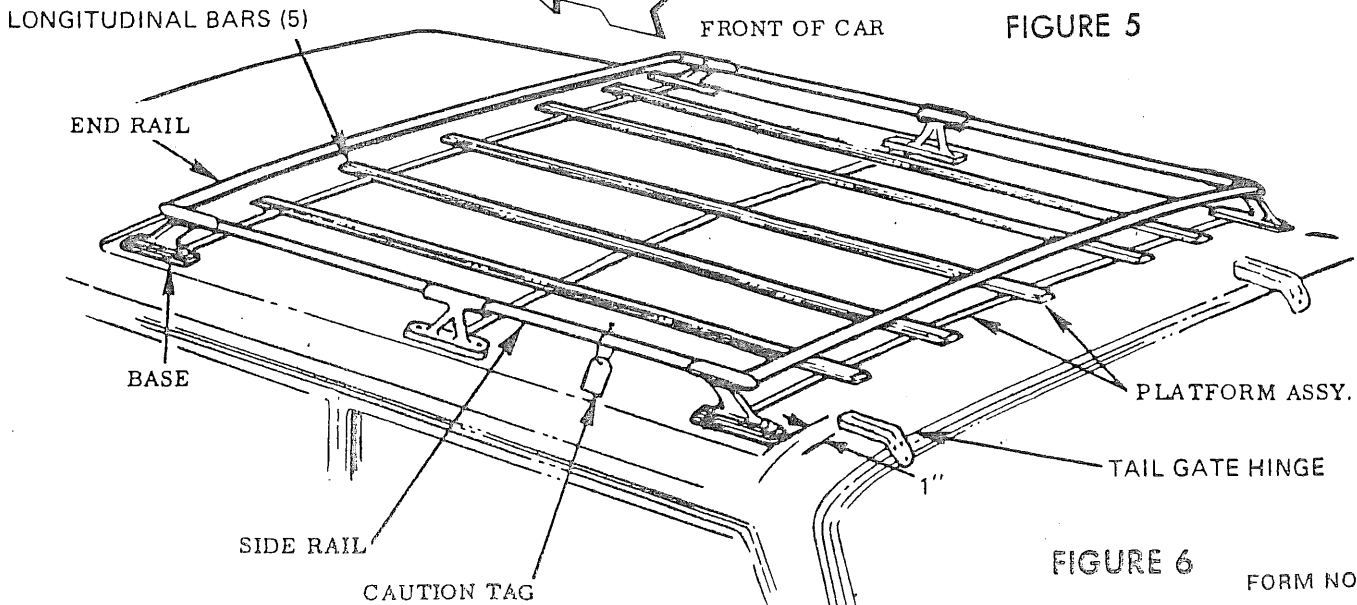


FIGURE 6