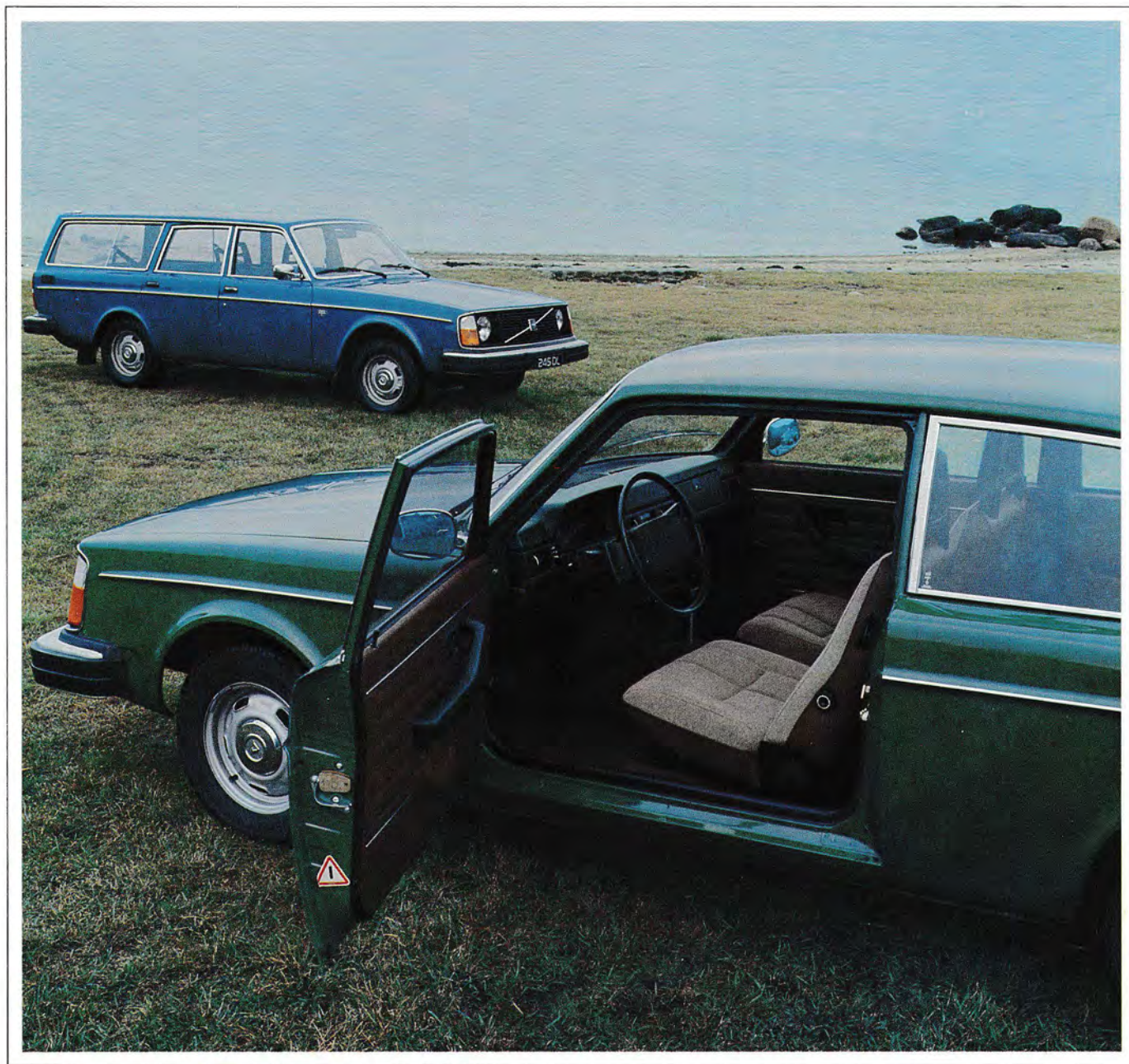


VOLVO

Disabled driver's car



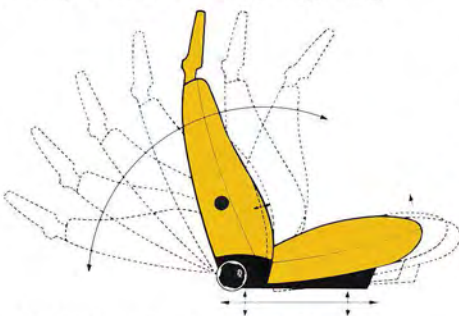
Most of the models of the Volvo 240 Series can be specified in a special version for disabled drivers. You get the same classic styling and durable construction that Volvo is famous for. You get a spacious and comfortable car with inbuilt safety and many thoughtful

features. The wide doors, for example, with their generous opening angle considerably simplify getting in and out of the car. Volvo is well-known for its reliability and durability. From the ground up, every Volvo is built to last year after year — economically. Therefore, it is also

the best car to be specially equipped so that it suits your particular requirements. All versions with the carburetor engine can be supplied with an air powered system for hand control of the accelerator and brakes.



Safety is the main consideration when deciding how to equip your car. However, comfort and convenience are almost as important. Safety, comfort and convenience are the fundamentals on which every Volvo is built. Plenty of space both front and rear. A safe and functional driving area with ideally positioned instruments and controls. Smooth rounded contours and large padded surfaces. The front seats have been designed in co-operation with medical experts and incorporate an unusually large range

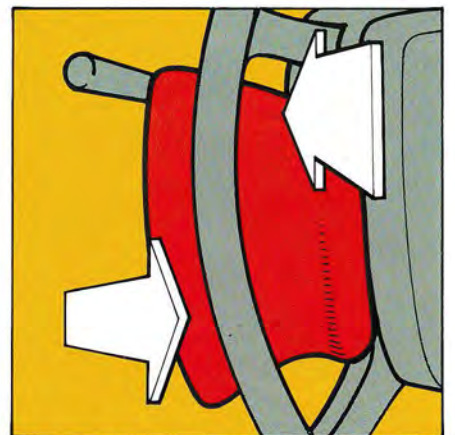


of adjustments. The relatively small diameter of the steering wheel and its ideal angle facilitates getting in and out. By means of the power steering system, steering forces can be reduced by about 80% when manoeuvring at low speeds – for example when park-

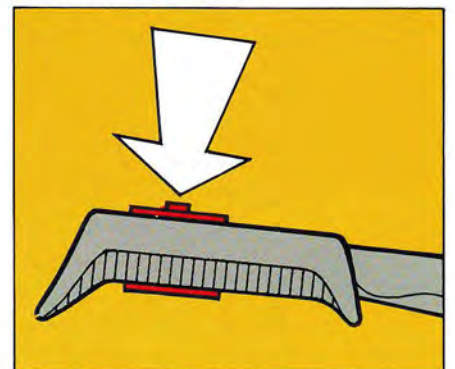
ing or turning in confined areas. An automatic transmission is, as a rule, standard in connection with special equipment for disabled drivers. To satisfy the needs of various types of physical handicap, a pneumatic system is available for hand control of the accelerator and brakes and very little effort is required. The compressor and pressure tanks for the system are installed in the engine compartment. A system of valves and air cylinders is used to power the various pedals and levers.

The system can be used for hand control of the accelerator and foot brakes and also the handbrake. The throttle/brake control consists of two conveniently gripped handles which are mounted between the spokes of the steering wheel. The accelerator is operated by pulling one lever towards the driver; pushed away, the other lever applies the brakes. The handbrake is applied by pushing a button on the lever and lifting it simultaneously. This system is designed for use with Volvo's four-cylinder carburetor engine. The design of the system also enables it to be used for other compressed-air operated purposes, etc.

For more information about this car, please refer to the Volvo 240 Series brochure.



Controls for pneumatic operation of accelerator and brakes.



Push button operation for pneumatic control of handbrake.

VOLVO

The factory reserves the right to make changes at any time, without notice, in prices, colours, materials, equipment, specifications and models and also to discontinue models.